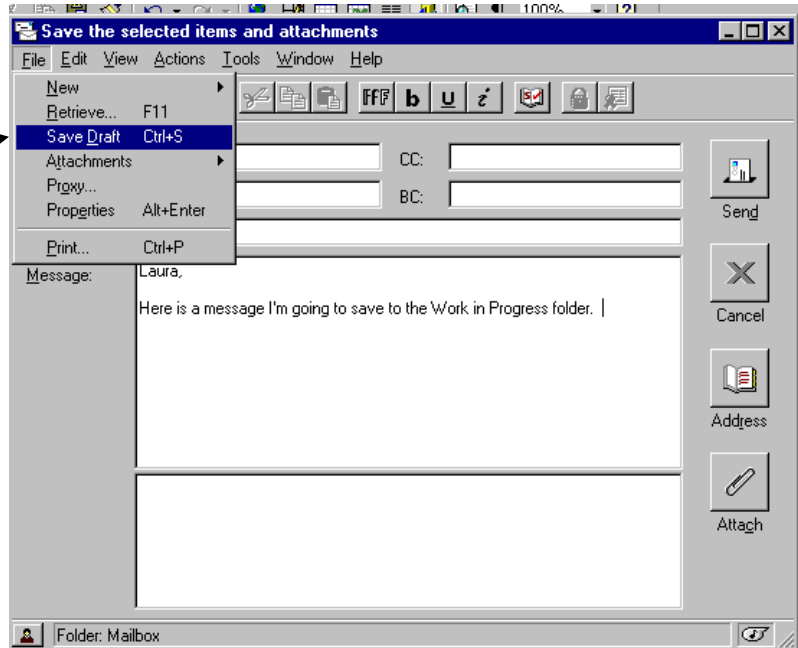


Work in Progress GroupWise

Have you ever been interrupted while writing an email? You may want to save your email to continue at a later time. Here's how to do this when you're using GroupWise:

Click on FILE and select Save Draft.



This box will appear.

Make sure that "Work In Progress" is selected, as it is here, and click OK.



To finish your message, simply click on the "Work In Progress" folder and double-click on your message.