

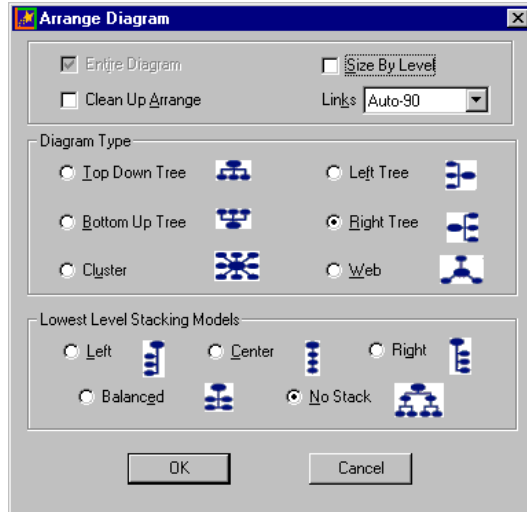
Inspiration!

Arrangement and Outline

1. Change the arrangement of your diagram. Click on the ARRANGE button. (Note: You do not have to



select your diagram first.) Select the type of arrangement you wish, then click OK.



2. Switch from diagram to outline. Click on the OUTLINE button. (Note: You do not have to select your diagram first.) Use the buttons on the toolbar to switch back to diagram, add topics and subtopics, move text left or right, and more.



3. Edit your outline. Use the toolbar at the bottom to change the font, font size, and color.

